

BLITZKRIEG COMMANDER II

A Very British Civil War West Somerset 1938

Nik Harwood
2011

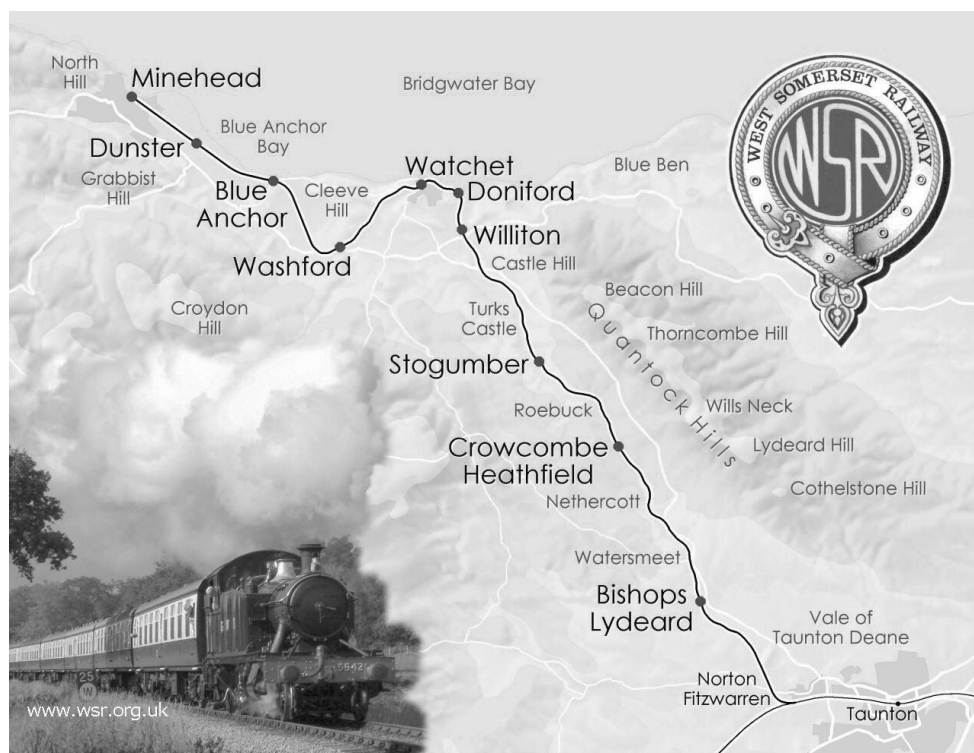
In 1936, Britain's playboy King Edward VIII, thought by some to have far-right sympathies and a propensity for meddling in politics, abdicated in order to marry American divorcee Wallis Simpson. In the 'A Very British Civil War' (aka VBCW/BCW/ECW3) universe he refuses to give up the throne.

By 1938, parliament is dissolved, torn apart by the resultant constitutional crisis. The King appoints Oswald Mosley, leader of the British Union of Fascists, as Prime Minister. Opposition to the new government forms around the Anglican League - a loose coalition of churchmen, disgruntled members of parliament and left-leaning political groups.

Attacked by regular forces loyal to the King and their BUF auxiliaries, the Anglican League militarises, as do communist organisations, local defence volunteers and a whole host of disparate groups. Scotland closes its border and declares itself independent, nationalists take up arms in Wales and Cornwall, and the British Empire begins to crumble.

Set in a fictionalised and stereotypical bygone age, replete with "what-ho's" and "toodle-pip's", cricket on the village green and tea with the vicar, Britain descends into civil war!

Used with the kind permission of Jon Price: <http://www.btinternet.com/~jprice9/index.html>



This guide sets the scene for the conflict in West Somerset, centred on the village of Dunster. With the coast to the north and Exmoor to the south, the landscape is diverse: beaches, marshes, forests, moors. There are hamlets, villages, towns and a modicum of industry (centred on the railway and the harbours at Watchet and Minehead which distribute the products of Watchet paper mill and the mines on the Brendons).

Each faction is described with local background, flavour and context and indicates troop types that are available to it.

This guide is intended for use with **Blitzkrieg Commander II** from Pete Jones at **Specialist Military Publishing**; I have written it with **Pendracken** 10mm figures in mind for my own gaming.

Stats have been harvested from appropriate lists within BKCII and close approximations have been made where no stat exists for a unit type. There are stats for most appropriate units – not all of which are included in these lists for use by West Somerset factions.

Page numbers are from BKC II unless otherwise indicated.

Credits:

Andy Cameron
Steve Johnson
Rich Parker
Jon Price

Feedback is appreciated:
nikharwood@gmail.com

WEST SOMERSET FACTIONS

Nationalists / Royalists

Luttrell Yeomanry

Crown Estate

Colonel Luttrell has gathered the troops from the heart of the village to garrison Dunster Castle; he is attempting to procure AA capability to defend the castle from air attack which he fears and remembers with some horror from his WW1 days.

The Crown Estate have called in their estate managers and workers to defend their territory and property and have ensured clear and open channels of communication with the Luttrell Yeomanry. The Estate property abuts the grounds of Dunster Castle from the River Avill at the foot of castle hill.

Command: 9 / 8

Doctrine: Normal

Special: Accurate Gunnery / Dispersed Artillery / Counter-Battery [p59]:

Accurate Gunnery: Deduct one die when rolling for artillery deviation

Dispersed Artillery: FAOs suffer a -1 command penalty for each additional artillery unit requested beyond the first one

Counter-Battery: Field artillery units may not be used for counter-battery fire

- Conscripts
- Regulars
- Snipers
- Anti-Tank rifles
- British Armoured Cars
- Vickers Light Tanks
- Whippet tanks
- WW1 tanks
- Cavalry
- Machine Guns
- Mortars
- Anti-Tank Guns
- Artillery
- Air Support



British Union of Fascists

West Somerset can seem a place of contrasts: from the landed gentry to the common farmhand, and the legacy of a feudal society runs deep. The middle-ground is inhabited by the emerging middle class of retailers and merchants – who seek to rise up from their ties to the land and break free from them. They are as fearful of the wealth and influence of the country aristocracy as they are the massed, mostly illiterate, agricultural and industrial workforce and their nascent socialist principles. The BUF have capitalised on this fear and mobilised an organised and disciplined force, supported by ‘advisors’, mostly veterans of the Spanish Civil War.

Command: 9 / 8

Doctrine: Flexible

Special: Infiltration [p81]:

+1 to command value for flank deployment

- PzKw I Light Tanks
- Italian L3/35 Tankettes
- Armoured trucks
- Armoured cars
- Conscripts
- Regulars
- Snipers
- Anti-Tank rifles
- Cavalry
- Machine Guns
- Mortars
- Anti-Tank Guns
- Artillery
- Air Support



Socialists

Grand Union of Marxist Railway Workers [West Somerset Railway]

Paper Makers Collective [Watchet]

Doniford Bay Dockers [Watchet]

The left-wing militias are formed around the unions within the three separate (but linked) industrialised areas of West Somerset. The West Somerset Railway, running from Minehead to Bishop's Lydeard and on to Taunton, is used both for passenger and freight traffic, including the movement of goods and materials through Watchet; it is because of this that the Grand Union of Marxist Railway Workers has assumed the co-ordinating role for the three militias. They currently hold control of the railway and its assets and have armoured a locomotive and a few carriages.

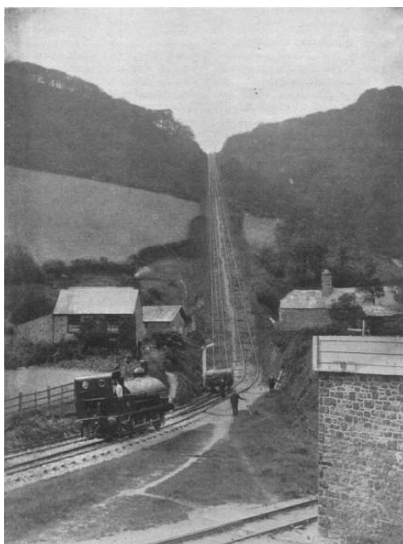
Command: 8 / 7

Doctrine: Rigid

Special: Poor Combined Arms [p119]:

-1 command penalty when attempting to issue orders to infantry and armour [arms of service] as part of the same formation

- Armoured Train
- Armoured Trucks
- Armoured Cars
- Anti-Tank Guns
- Militia
- Cavalry
- Machine Guns
- T26 Medium Tanks
- Air Support



Armoured Train

Stats for the armoured train are adapted from pompey rich on the SMP forum – here:

<http://www.blitzkrieg-commander.com/Content/Forum/Topic.aspx?CategoryID=2&ForumID=4&TopicID=11373>

Troops	Arm	Move	AT	AP	CA	Hits	Save	Cost	Note
HQ (CV7)	CMD	60		2/30		4	6	30	1
Armoured Locomotive	TRN	20		3/60	2	6	3	60	2
Gun Carriage	ART		2/40	3/80	2	6	4	100	3
Assault Wagon	TRN			3/60	4	6	5	90	4, R
Flat Car	TRN					4	5	20	5

Note 1: HQ

- Based in the armoured locomotive
- Uses locomotive's integral machine gun while aboard

Note 2: Armoured Locomotive

- May carry one HQ unit
- Integral machine gun may be used as AA
- Train derailed if six unsaved hits are taken

Note 3: Gun Carriage

- 75mm gun has 270 degree firing arc
- One gun carriage fires forward, one to rear of train

Note 4: Assault Wagon

- Transports one infantry unit
- Fires two integral machine guns with 90 degree arcs left and right of the train

Note 5: Flat Car

- Transports one recce unit, one infantry unit, one infantry support unit or one light tank / tankette unit

Anglican League

Parish of St George Yeomanry

The Revd Hancock has formed a yeomanry from the congregations of the Parish Churches of Dunster (St George), Carhampton (St John the Baptist), Timberscombe (St Petroc), Withycombe (St Nicholas), Rodhuish (St Bartholomew) and Wooton Courtenay (All Saints).

The Anglican Yeomanry have developed a strong identity around their faith (and are receiving full support from the Bishop and Diocese) – it is this that separates them from their Nationalist & Royalist colleagues in the Luttrell Yeomanry and Crown Estate.

Command: 8 / 7

Doctrine: Fanatical [from CWC p55]

- 25cm initiative distance
- units may fall-back any distance without being knocked-out
- do not roll for fall-back when dug-in
- add one to the breakpoint per 1000 points
- HQs can only issue orders to units in their own formation

Special: Poor Combined Arms

-1 command penalty when attempting to issue orders to infantry and armour [arms of service] as part of the same formation

- Armoured Trucks
- Armoured Cars
- Militia
- Conscripts
- Machine Guns
- Cavalry
- Anti-Tank Guns



Local Defence Volunteers

Dunster Foresters [Citizen Militia]

Loosely formed from the agricultural labourers throughout the Avill valley and organised locally on the basis of the pubs they frequent, the Dunster Foresters are skilled woodsmen – and good shots. They have accomplished horsemen in their ranks as well. Their prime motivation is a desire to maintain the status quo of village life – and they are fearful of outside influence gaining a foothold in West Somerset and bringing further modernisation and change.

Command: 8 / 7

Doctrine: Normal

Special: n/a

- Militia
- Snipers
- Cavalry
- Anti-Tank Guns
- Armoured Trucks



West Somerset Hauliers & Highwaymen [Brigands]

Contracted labourers with access to new and modern means of transport are a significant factor in the development of the agricultural industry in West Somerset. Increasingly, individuals – and collectives – are bringing haulage ability to employers, manufacturers and industry across the area. With their vehicles they are accustomed to operating in the shadow economy as well and have been involved in smuggling along the North Devon / West Somerset coast for years – they see the Civil War as an opportunity to exploit the black market even further.

Command: 8 / 7

Doctrine: Guerilla [CWC p55]

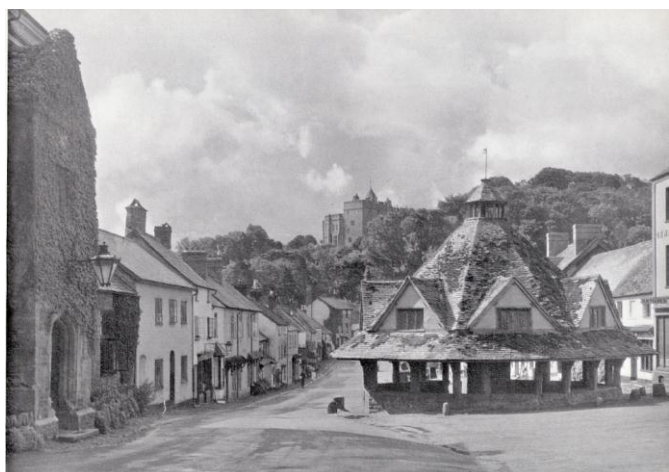
- Initiative distance is 30cm
- Cannot use *Fixed Formations*
- Three units per 500 points may be placed in the reserve pool
- No command penalty for flank deployment or for fighting at night
- Troops on foot may hide when out-of-sight of the enemy
- Opponent always deploys first
- -1 to the breakpoint per 500 points

Special: Infiltration / Poor Combined Arms

Infiltration: +1 to command value for flank deployment

Poor Combined Arms: -1 command penalty when attempting to issue orders to infantry and armour [arms of service] as part of the same formation

- Cavalry
- Militia
- Snipers
- Morris C8 Quads
- Motorcycles
- Armoured Cars



POTENTIAL BATTLES

Dunster

- Village:
- Marsh / Beach – landing from Watchet
- Deer Park / Packhorse Bridge / Water Mill

**DELIBERATE ATTACK
AMPHIBIOUS ASSAULT
RIVER ASSAULT**

Minehead

- The Parks
- Harbour
- North Hill

**ENCOUNTER
AMPHIBIOUS ASSAULT
BRIDGEHEAD**

Carhampton

BREAK-OUT

Washford

- Cleeve Abbey
- Station
- Cross
- The Mineral Line

**ASSAULT
BREAKTHROUGH ATTACK
PURSUIT
ENCIRCLEMENT**

Williton

- Roughmoor
- Hospital

**BATTLE OF ATTRITION
ASSAULT**

Watchet

- Harbour & Docks
- Wansborough Mill
- Doniford Bay

**AMPHIBIOUS ASSAULT
DELIBERATE ATTACK
BRIDGEHEAD**

St Audries

- School

BREAKTHROUGH ATTACK